



# SECONDPONCE DE LEON BAPTIST CHURCH NEWS

VOLUME LXXXIII

MAY 31-JUNE 13, 2015

NO. 10

## briefly

**5/30 ~ VBS Workday.** VBS Volunteers will meet in the Youth Area on **Saturday, May 30** at 9 a.m. Questions? Contact Lindsey Richardson at [lrichardson@spdl.org](mailto:lrichardson@spdl.org).

**6/6 ~ Recycling Center Open.** Bring your recycling to Second-Ponce on **Saturday, June 6**, from 10 a.m. to 3 p.m. in our lower parking lot. Visit [www.keepatlantabeautiful.org](http://www.keepatlantabeautiful.org) for more information.

**Take a Break at Ridgecrest Lodge.** Spring is the perfect time to book a weekend at Second-Ponce's Ridgecrest Lodge! The lodge is now open for the season. Our 10-bedroom Mountain Lodge, located 16 miles east of Asheville, is available to church members and their families for a small fee. The lodge is available from April through November with a confirmed reservation. Call the Church Office for more details at 404.266.8111.

**Try Our Online Giving Option for the Summer.** Summer is here and so are family vacations. This is the perfect time to try our online giving options. No matter where you are, it's easy to set up an account from your mobile device or computer. You can set up a secure automatic recurring donation or a one-time gift to the ministry of your choice. To begin, visit [www.easytith.com/secondponce](http://www.easytith.com/secondponce) or go to [www.spdl.org](http://www.spdl.org) and click the Give Now button.

**Like Second-Ponce de Leon on Facebook.** Keep up with the latest Second-Ponce news and updates by liking us on Facebook at [www.facebook.com/secondponce](http://www.facebook.com/secondponce).

## Register Now for SPdL U in June

Join us for SPdL U, our Wednesday night program starting **June 3**, as Dr. Charles Qualls leads a series of discussions on the "Old Testament and Prophecies and Words: Did Jesus Fulfill Them?" at 6 p.m. in the Fellowship Hall. During June, Dr. Qualls will explore how many key teachings of the Old Testament found their way into the words of our New Testament. Please register for these sessions online at [www.spdl.org/spdlu](http://www.spdl.org/spdlu). You may also download a registration form at [www.spdl.org/spdlu](http://www.spdl.org/spdlu) or pick up a form in the Welcome Center and bring it with you to the course. Walk-ins will be accepted when space allows. For more information, visit [www.spdl.org/spdlu](http://www.spdl.org/spdlu).



## Donations Needed for VBS



VBS is approaching, and we still need donations to make it a success!

### Items needed are:

- newspapers
- magazines
- cereal or cracker boxes
- tin cans (soup size or larger)
- plastic bottles
- bottle caps
- round plastic lids.

You can drop off donations at the North Bridge on Sundays, or at Lindsey Richardson's office during the week. Deadline: **Friday, June 5**. Questions? Contact Lindsey Richardson at [lrichardson@spdl.org](mailto:lrichardson@spdl.org).

## Images of Israel is Back by Demand!

Join us for 5 sessions, starting **Tuesdays, June 9** at 10 a.m. in Room B204, and enjoy the sights of Israel as each session will feature video highlights and interviews, led by Dr. Charles Qualls. We'll explore the complexity of Israel through relevant scriptures, ideas and historic documents. This venture is a project of the Shalom Hartman Institute. It is intended to provide a robust learning experience about Israel while helping Christians to engage the people, state, nation and land. Please register by contacting Dr. Charles Qualls at 404-591-4341 or at [cqualls@spdl.org](mailto:cqualls@spdl.org).

**everyone knows ONE**

One neighbor, one co-worker, a family member or a friend – we all have that person who would be here if we invited them. Reach out today! With the new session of SPdL U, it's the perfect time to invite someone to church!

## CHURCH CALENDAR

### Sunday, May 31

9:45 a.m. Sunday School  
11:00 a.m. Worship  
4:30 p.m. Terminus Ensemble

### Monday, June 1

8:00 a.m. Senior Adults Trip to Nashville

### Tuesday, June 2

6:30 p.m. Evening Edition

### Wednesday, June 3

5:00 p.m. Fellowship Supper  
6:00 p.m. SPdL U  
7:15 p.m. Sanctuary Choir Rehearsal

### Saturday, June 6

10:00 a.m. Keep Atlanta Beautiful  
Recycling

### Sunday, June 7

9:45 a.m. Sunday School  
11:00 a.m. Worship

### Monday, June 8

9:00 a.m. Vacation Bible School

### Tuesday, June 9

9:00 a.m. Vacation Bible School  
10:00 a.m. Images of Israel  
6:30 p.m. Evening Edition

### Wednesday, June 10

9:00 a.m. Vacation Bible School  
5:00 p.m. Fellowship Supper  
6:00 p.m. SPdL U  
7:15 p.m. Sanctuary Choir Rehearsal  
7:30 p.m. Orchestra Rehearsal

### Thursday, June 11

9:00 a.m. Vacation Bible School  
5:00 p.m. Vacation Bible School  
- Family Night

## Contributions Report

Giving as of May 17, 2015

Weekly Goal	\$26,777
Weekly Receipts	\$23,311
Year-To-Date Goal	\$707,278
Year-To-Date Receipts	\$713,100

Giving – pledged or not – is welcome and encouraged any time.

## TV SERVICE TIMES

AIB Network

Our schedule is twice a week:

Monday, 8-9 p.m.

Sunday, 11 a.m.-noon

Questions? Call AIB at 404.892.0454.

## AMONG OUR MEMBERS

### IN LOVING MEMORY

William Willis "Bill" Anderson, Jr.  
May 16, 2015

### SYMPATHY TO

Betsy Perkins,  
in the death of her father,  
William W. Anderson, Jr.,  
on May 16, 2015

Anne Marie Alexander,  
in the death of her sister,  
Ada Alexander Busbee,  
on May 13, 2015

## Second-Ponce History

*Christ Before Pilate* 1928

by Dean Cornwell is

actually an illustration

from a book called *Man*

of Galilee published that

same year. American

Cornwell is called the

"Dean of Illustrators"

and did hundreds of

paintings and drawings

for magazines and books from the 1920's till late

1950's. Our copy was given to SPdL in 1987, and

has hung in several Sunday school classes and

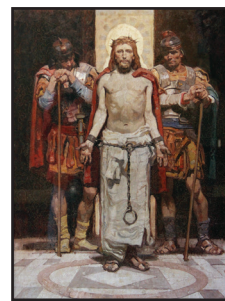
was used during the community Good Friday

service. Please come by the Heritage Window

and view this and the other artwork about the life

of Jesus. *This display was put together by Church*

*Historian John Roma.*



## in the know

**2015–2016 Scholarship Applications Due.** Each year, Second-Ponce de Leon receives and distributes college scholarship money that is made available through designated funds. To apply for a scholarship for the 2015–2016 school year, pick up an application form at the Church Office or download it at [www.spdl.org](http://www.spdl.org). Completed forms are due back at the Church Office by **Friday, June 5**. Questions? Contact Suzu Tran (404.591.4346 or [stran@spdl.org](mailto:stran@spdl.org)).

**ECS to Host Summer Camps, Register Now.** Our Early Childhood School will offer summer camps for all students ages 3–6 years old and fully potty trained. Week-long camps will be offered during June and July. Camps are \$175 for the week and run Monday–Friday from 9 a.m.–1 p.m. For more information, contact Whitney Lea (404.591.4374 or [wlea@spdl.org](mailto:wlea@spdl.org)).

**ECS Enrolling for Fall 2015.** Second-Ponce's Early Childhood School is now enrolling for the 2015–16 school year! We have classes from 9 a.m. until noon for children ages 12 months to 5 years. Our ECS offers one of the lowest teacher/student ratios among Buckhead preschools. For tour dates and registration information, go to [www.spdl.org/ministries/ecspreschool](http://www.spdl.org/ministries/ecspreschool). For additional information, contact Helen Dykes (404.591.4376 or [hdykes@spdl.org](mailto:hdykes@spdl.org)).

## MENUS

### Wednesday, June 3

Fried chicken, potato salad, mixed vegetables, salad, rolls & banana pudding

### Wednesday, June 10

Meat loaf, mashed potatoes, green beans, salad, rolls & assorted cakes

## CONTACT US

[www.spdl.org](http://www.spdl.org)

2715 Peachtree Rd., NE  
Atlanta, GA 30305-2916

Suzu Tran, Editor

[www.facebook.com/secondponce](http://www.facebook.com/secondponce)

Church Office  
404.266.8111

Family Life Center  
404.231.0375



SECOND-  
PONCE  
DE LEON  
BAPTIST  
CHURCH